

Metal Panel Enclosures

For many years, GW metal enclosures have proven to be reliable and robust when deployed in outdoor and harsh environment. Built to IP65 specifications, they offer protection against dust and liquid ingress for electrical and electronic components installed within.

Some Key Features

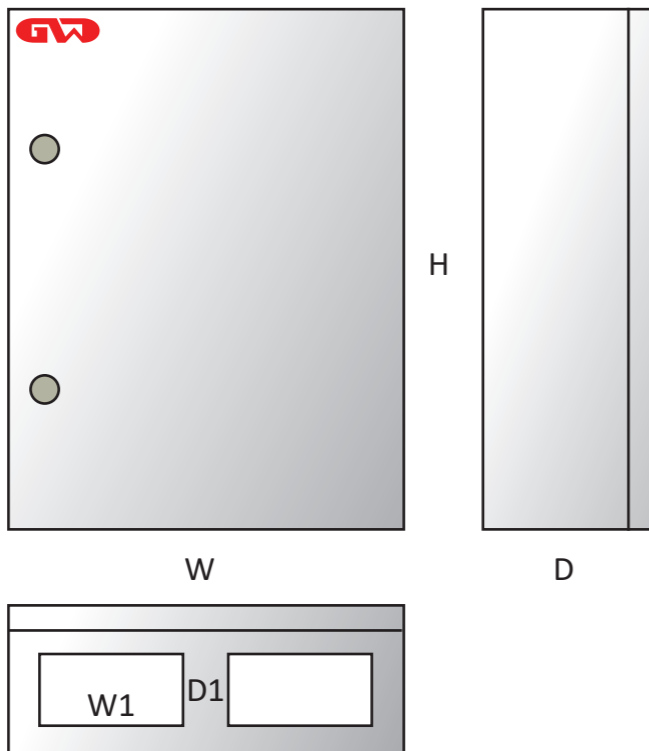
- * TUV / PSB IP65 certified*
- * IK10 impact rating
- * Wall thickness of 1.2mm for size below 800mm height and 1.5mm for above
- * 2mm thick zinc coated mounting plate
- * Standard colour options, RAL 7032 and 7035
- * Stainless steel 316 option available
- * Wall mounting accessories included as standard
- * Left-right reversible door opening
- * Customized sizes are available upon request



GW enclosures installed along Coronation Street



GW enclosures installed at Macritchie Reservoir for camera surveillance system



All dimensions in mm

Single Door Model	Stainless Steel 304	H (mm)	W (mm)	D (mm)	No. of Locks	Gland Hole (W1 x D1 mm)
G2AC21/202015	G2ST21/202015	200	200	150	1	130x50
G2AC25/252015	G2ST25/252015	250	200	150	1	130x50
G2AC30/302015	G2ST30/302015	300	200	150	1	130x50
*G2AB102/302515	G2ST102/302515	300	250	150	1	180x62
G2AB103/302520	G2ST103/302520	300	250	200	1	180x62
G2AC31/303015	G2ST31/303015	300	300	150	1	216x62
G2AB105/303020	G2ST105/303020	300	300	200	1	216x62
G2AC32/304015	G2ST32/304015	300	400	150	1	216x62
G2AC33/304020	G2ST33/304020	300	400	200	1	216x62
G2AC40/403015	G2ST40/403015	400	300	150	1	216x62
G2AB107/403020	G2ST107/403020	400	300	200	1	216x62
G2AC34/403025	G2ST34/403025	400	300	250	1	216x62
G2AC41/404015	G2ST41/404015	400	400	150	1	216x62
G2AB108/404020	G2ST108/404020	400	400	200	1	216x62
G2AB104/404025	G2ST104/404025	400	400	250	1	330x100
G2AC42/405020	G2ST42/405020	400	500	200	1	330x100
G2AC43/405025	G2ST43/405025	400	500	250	1	330x100
G2AC44/406020	G2ST44/406020	400	600	200	1	417x120
G2AC45/406025	G2ST45/406025	400	600	250	1	417x120
G2AB109/504015	G2AB109/504015	500	400	150	1	216x62
G2AB110/504020	G2ST110/504020	500	400	200	1	330x100
G2AB111/504025	G2ST111/504025	500	400	250	1	330x100
G2AB112/504030	G2ST112/504030	500	400	300	1	330x100
G2AC50/505020	G2ST50/505020	500	500	200	1	417x120
G2AC51/505025	G2ST51/505025	500	500	250	1	417x120
G2AC52/505030	G2ST52/505030	500	500	300	1	417x120
G2AC53/507020	G2ST53/507020	500	700	200	1	417x120
G2AC54/507025	G2ST54/507025	500	700	250	1	417x120
G2AB113/604020	G2ST113/604020	600	400	200	2	330x100
G2AB114/604025	G2ST114/604025	600	400	250	2	330x100
G2AC64/604030	G2ST64/604030	600	400	300	2	330x100
G2AB116/605020	G2ST116/605020	600	500	200	2	417x120
G2AB117/605025	G2ST117/605025	600	500	250	2	417x120
G2AC63/605030	G2-ST63/605030	600	500	300	2	417x120
G2AC60/606020	G2ST60/606020	600	600	200	2	417x120
G2AC61/606025	G2ST61/606025	600	600	250	2	417x120
G2AC62/606030	G2ST62/606030	600	600	300	2	417x120
G2AB118/705020	G2ST118/705020	700	500	200	2	417x120
G2AB119/705025	G2ST119/705025	700	500	250	2	417x120
G2AB120/705030	G2ST120/705030	700	500	300	2	417x120
G2AB121/806020	G2ST121/806020	800	600	200	2	417x120
G2AB122/806025	G2ST122/806025	800	600	250	2	417x120
G2AB123/806030	G2ST123/806030	800	600	300	2	417x120
G2AC80/808030	G2ST80/808030	800	800	300	2	330x100 (x2)
G2AB124/10060025	G2ST124/10060025	1000	600	250	3	417x120
G2AB125/10060030	G2ST125/10060030	1000	600	300	3	417x120
G2AC65/1006040	G2ST65/1006040	1000	600	400	3	330x100 (x2)
G2AB126/10080025	G2ST126/10080025	1000	800	250	3	330x100 (x2)
G2AB127/10080030	G2ST127/10080030	1000	800	300	3	330x100 (x2)

Single Door Model	Stainless Steel 304	H (mm)	W (mm)	D (mm)	No. of Locks	Gland Hole (W1 x D1 mm)
G2AB129/1208030		1200	800	300	3	330x100 (x2)
G2AB128S/12010030		1200	1000	300	3	417x120 (x2)
G2AB131/1408030		1400	800	300	3	330x100(x2)

*IP65 specification certified by PSB-TUV with model G2AB102



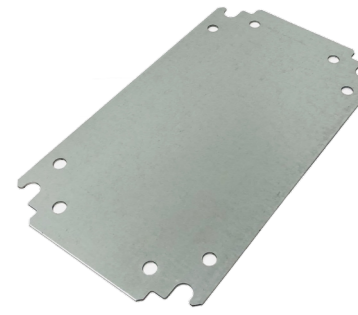
Window With Inner Door



Stainless Steel 304 Panel



Standard Panel (back view)



Standard Mounting Plate

Enclosure with Inner Door	Glass Window Door	Window with Inner Door	H (mm)	W (mm)	D (mm)	No. of Locks	Gland Hole (W1 x D1 mm)
GWI-304015	GWP304015	GWIP304015	300	400	150	1	216x62
GWI-403015	GWP403015	GWIP403015	400	300	150	1	216x62
GWI-403020	GWP403020	GWIP403020	400	300	200	1	216x62
GWI-403025	GWP403025	GWIP403025	400	300	250	1	216x62
GWI-404020	GWP404020	GWIP404020	400	400	200	1	216x62
GWI-406020	GWP406020	GWIP406020	400	600	200	1	417x120
GWI-504020	GWP504020	GWIP504020	500	400	200	1	330x100
GWI-505020	GWP505020	GWIP505020	500	500	200	1	417x120
GWI-604020	GWP604020	GWIP604020	600	400	200	2	330x100
GWI-606020	GWP606020	GWIP606020	600	600	200	2	417x120
GWI-606025	GWP606025	GWIP606025	600	600	250	2	417x120
GWI-606030	GWP606030	GWIP606030	600	600	300	2	417x120
GWI-705020	GWP705020	GWIP705020	700	500	200	2	417x120
GWI-705025	GWP705025	GWIP705025	700	500	250	2	417x120
GWI-806020	GWP806020	GWIP806020	800	600	200	2	417x120
GWI-806025	GWP806025	GWIP806025	800	600	250	2	417x120
GWI-806030	GWP806030	GWIP806030	800	600	300	2	417x120
GWI-808030	GWP808030	GWIP808030	800	800	300	2	330x100 (x2)
GWI-10060025	GWP10060025	GWIP1208030	1200	800	300	3	330x100 (x2)

Double Door Model	H	W	D	No. of Locks	Gland Hole (W1 x D1 mm)
G2AB122D/608025	600	800	250	2	330x100 (x2)
G2AB122D/806025	800	600	250	2	330x100 (x2)
G2AB130D/10010030	1000	1000	300	2	417x120 (x2)
G2AB128D/12010030	1200	1000	300	2	417x120 (x2)



Surface Mount Metal Box for MCBs

GW AS series surface mount metal enclosures are specifically designed for ease of installation of DIN standard MCBs.

Key Features

- * Built to IP54 specification
- * IK10 impact rating
- * Door with key lock as standard
- * Built-in DIN rail and MCB cover plate
- * Easy Knock-outs for cable entry
- * Epoxy polyester powder coated RAL7035 or 7032 colour



Model	H (mm)	W (mm)	D (mm)	No. of Rows	No. of MCBs / Row
AS1 13	275	355	110	1	13
AS2 13	380	355	110	2	13
AS3 13	530	355	110	3	13
AS4 13	680	355	110	4	13
AS5 13	830	355	110	5	13
AS1 18	275	455	110	1	18
AS2 18	380	455	110	2	18
AS3 18	530	455	110	3	18
AS4 18	680	455	110	4	18
AS5 18	830	455	110	5	18

Surface Mount Metal Box with 180° Swing Door and Lock

Clean line design enclosure with wide angle door opening for easy access and installation.

Key Features

- * Built to IP66 specification
- * IK10 impact rating
- * 180° swing door with lock
- * Epoxy polyester powder coated RAL7035 or 7032 colour



Model	H (mm)	W (mm)	D (mm)
TB15158	150	150	80
TB15308	300	150	80
TB20208	200	200	80
TB20308	300	200	80
TB20408	400	200	80
TB151512	150	150	120
TB153012	300	150	120

Model	H (mm)	W (mm)	D (mm)
TB202012	200	200	120
TB203012	300	200	120
TB204012	400	200	120
TB205012	500	200	120
TB303012	300	300	120
TB304012	400	300	120
TB3040155	400	300	155
TB3060155	600	300	155
TB3080155	800	300	155

Polyester Fibreglass Panel Enclosures

GW G2PT series enclosures are made from polyester fibreglass resin mix that offer excellent durability in moist and corrosive environment. These polyester fibreglass enclosures also offer high strength to weight ratio which is three times lighter when compared to mild-steel enclosures.

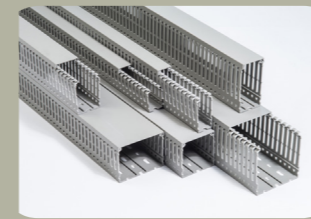
Key Features

- * Built to IP65 specification
- * IK8 impact rating
- * RAL7035 colour
- * -30°C to 120°C operating temperature
- * High resistance to corrosive environment
- * 180° door swing angle

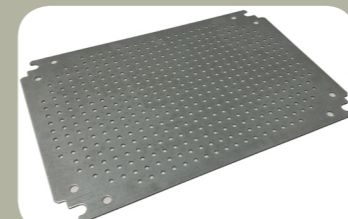


Opaque	Transparent Window	Window with Inner Door	H (mm)	W (mm)	D (mm)
G2PT102/302514	G2PX102/302514	G2PTX102/302514	300	250	140
G2PT107/403020	G2PX107/403020	G2PTX107/403020	400	300	200
G2PT108/404020	G2PX108/404020	G2PTX108/404020	400	400	200
G2PT110/504020	G2PX110/504020	G2PTX110/504020	500	400	200
G2PT113/604023	G2PX113/604023	G2PTX113/604023	600	400	230
G2PT117/605023	G2PX117/605023	G2PTX117/605023	600	500	230
G2PT123/806030	G2PX123/806030	G2PTX123/806030	800	600	300

Accessories



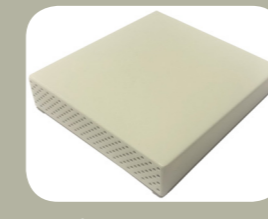
Cable Trunking



Perforated Mounting Plate



Panel Conopy



Air Vent Louver



Customized Engraved Label



Vent / Fan Guard and Filter



EZ-Air Fan Blower



Panel Heater



Aluminum DIN Rail



Key Lock



Panel Thermostat

GW Panel Enclosures

Safe Inside



Distributed by

